



## DECK CARGO BARGE

### SPECIFICATIONS & FEATURES

#### GENERAL

Type Of Vessel	Flat Top Deck Cargo Barge
Classification	BKI
DWT	9,343 T
Light Ship	1,710 T
Deckload	8T/m <sup>2</sup>
Cargo Area	2,442.50 m <sup>2</sup>
Draft	4.12 m

#### WEBS

Main deck	20" & 4" x 9mm
Bottom	20" & 4" x 9mm
SideShell	20" & 4" x 9mm
Longitudinal	20" & 4" x 9mm

#### DIMENSIONS

Length Over all	330FT
Breadth	96 FT
Depth	18 FT

#### TYPICAL WEBFRAME

Vertical	8"x8" x31lbs H-Beam
Diagonal	150mmx150mmx12mm OA
Chine Bar	50mm Round Bar

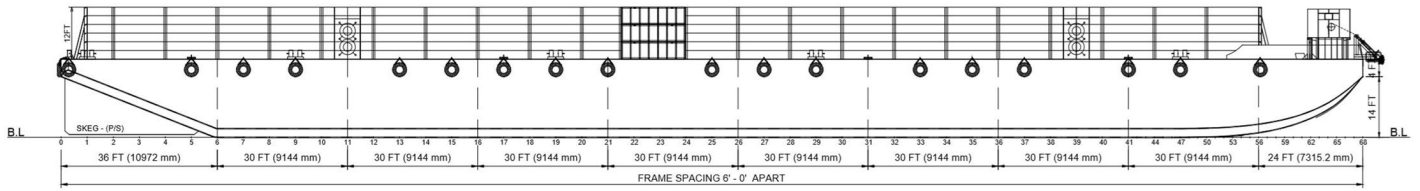
#### PLATE THICKNESS

Main Deck	12.0 & 14.0mm
Bottom	12.0 & 14.0mm
SideShell	12.0mm
Transom/Headlog	12.0mm
Bulkheads	9.0mm

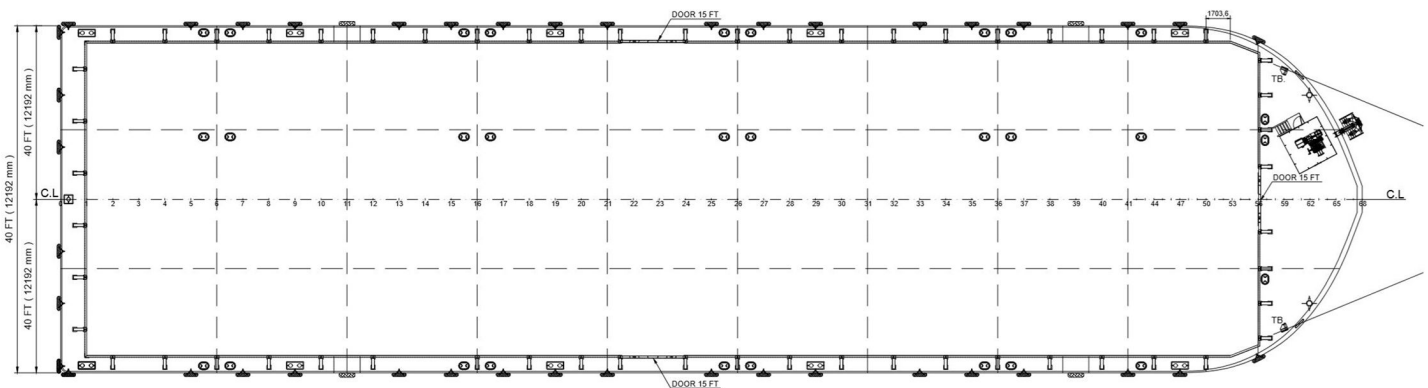
#### STIFFENER

Deck	150mm x 90mm x 9mm OA
Bottom	150mm x 90mm x 9mm OA
SideShell	150mm x 90mm x 9mm OA
Transverse Bulkheads	150mm x 90mm x 9mm OA
Longitudinal Bulkheads	150mm x 90mm x 9mm OA

# FLAT TOP DECK CARGO BARGE (GENERAL ASSEMBLY)



OUTBOARD PROFILE



MAIN DECK PLAN

## HEAD OFFICE

Jl. Kali Besar Barat no. 37, Jakarta 11230 Indonesia

Phone. +62 21 691 0382 (hunting)

Fax. +62 21 691 6268 / +62 691 6267

info@ktushipyard.com

www.ktushipyard.com



KTU SHIPYARD