



2024 Company Profile



## The Beginning

KTU has been in the marine industry for more than 30 years. It was originally established in 1982 as a humble marine workshop at Jalan Kakap in Jakarta. A shipyard in Marunda was soon acquired with its initial focus on wooden fishing vessels.

KTU Shipyard built its first shipyard at Sagulung, Batam in 2000 and Sekupang, Batam in 2005. In 2019, KTU Shipyard purchased its newest yard at Tanjung Riau, Batam, previously PT. Britoil Offshore. The rapid growth is primarily due to the strong demand and trust in KTU products and services. Both shipyards are supported by various operational facilities, skilled workforce, and extensive constructional sites up to international standards.

---

We build products that fulfil your transportation needs.

---

# Tugboats

## For all your towing needs

KTU Shipyard has built numerous tugboat sizes from 23m up to 32m from twin screw tugs to ASD tugs. Our tugboats delivery is a major contribution to our total production.

In 2022, KTU Shipyard has been innovating its tugboat range with world-famous naval architect Robert Allan Ltd.

Your favourite 27M Tugboat, only better.



TRA2700 by Robert Allan Ltd.





TRA2700 by Robert Allan Ltd.

Name : KARYA PACIFIC 2232

Length : 27M

Client : PT. Karya Pacific Shipping







# Technical Specification

Operations	Indonesia
Builder	KTU Shipyard
Designer	Robert Allan Ltd
Design	TRAders 2700
Length, oa	27 m
Beam, molded	8.8 m
Depth, molded	4 m
Draught	3 m
Gross tonnage	245 GT
Main Engines	2xYanmar 6EY17W 837 kW at 1,450 rpm
Propellers	Four-blade, 200 cm diameter
Bollard pull	29 Tonnes
Top speed	15 knots
Accommodation	For 12 Men







From left: Hendra Joe ( Karya Pacific Shipping), Hendri Chen ( KTU )  
Mike Fitzpatrick ( Robert Allan Ltd. ), Winarto Asnim ( KTU )  
Bill Hu ( Robert Allan Ltd. ), Setiawan ( KTU ), Aswan Aliang ( KTU )







ASHLEIGH KELLY Series



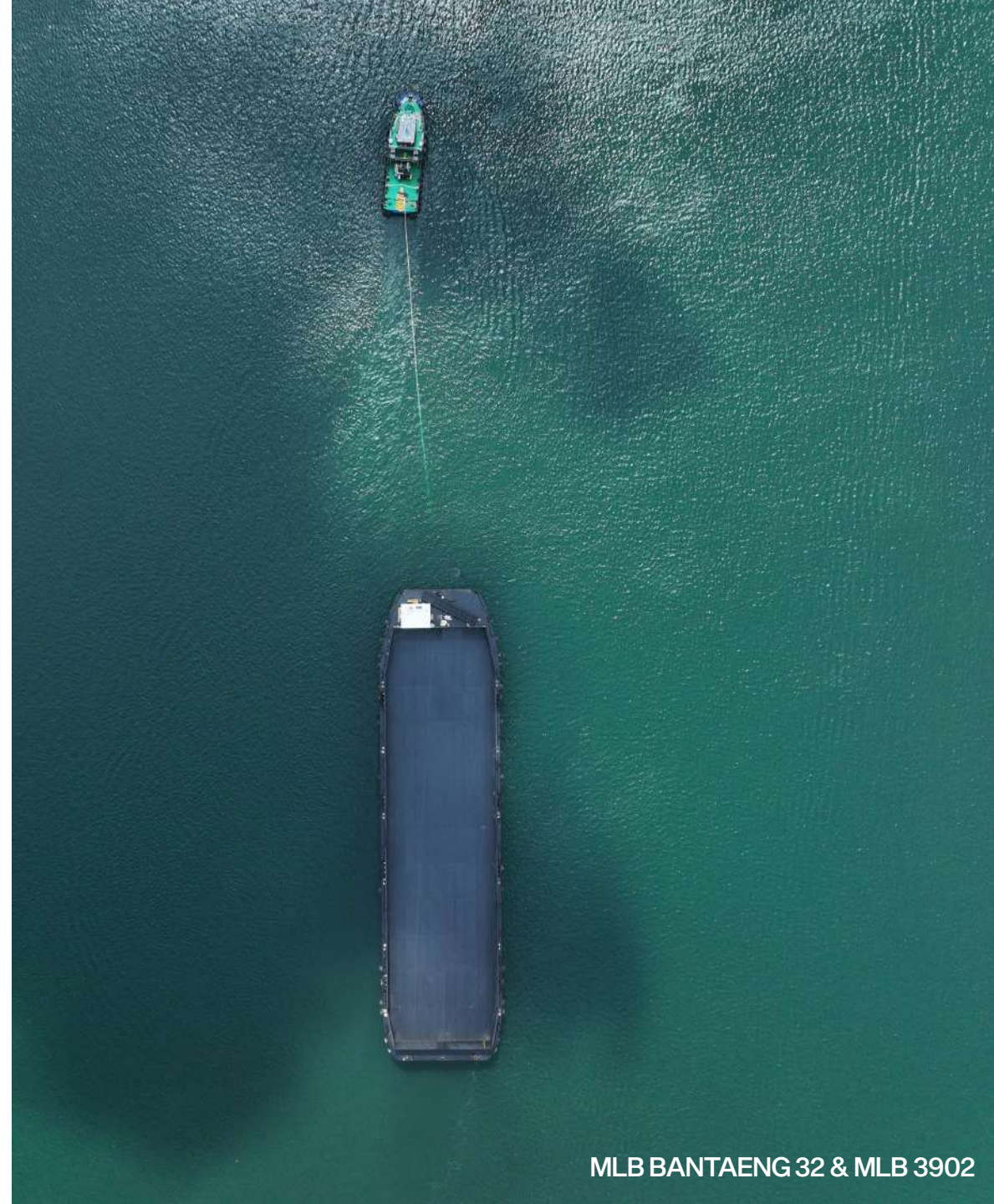
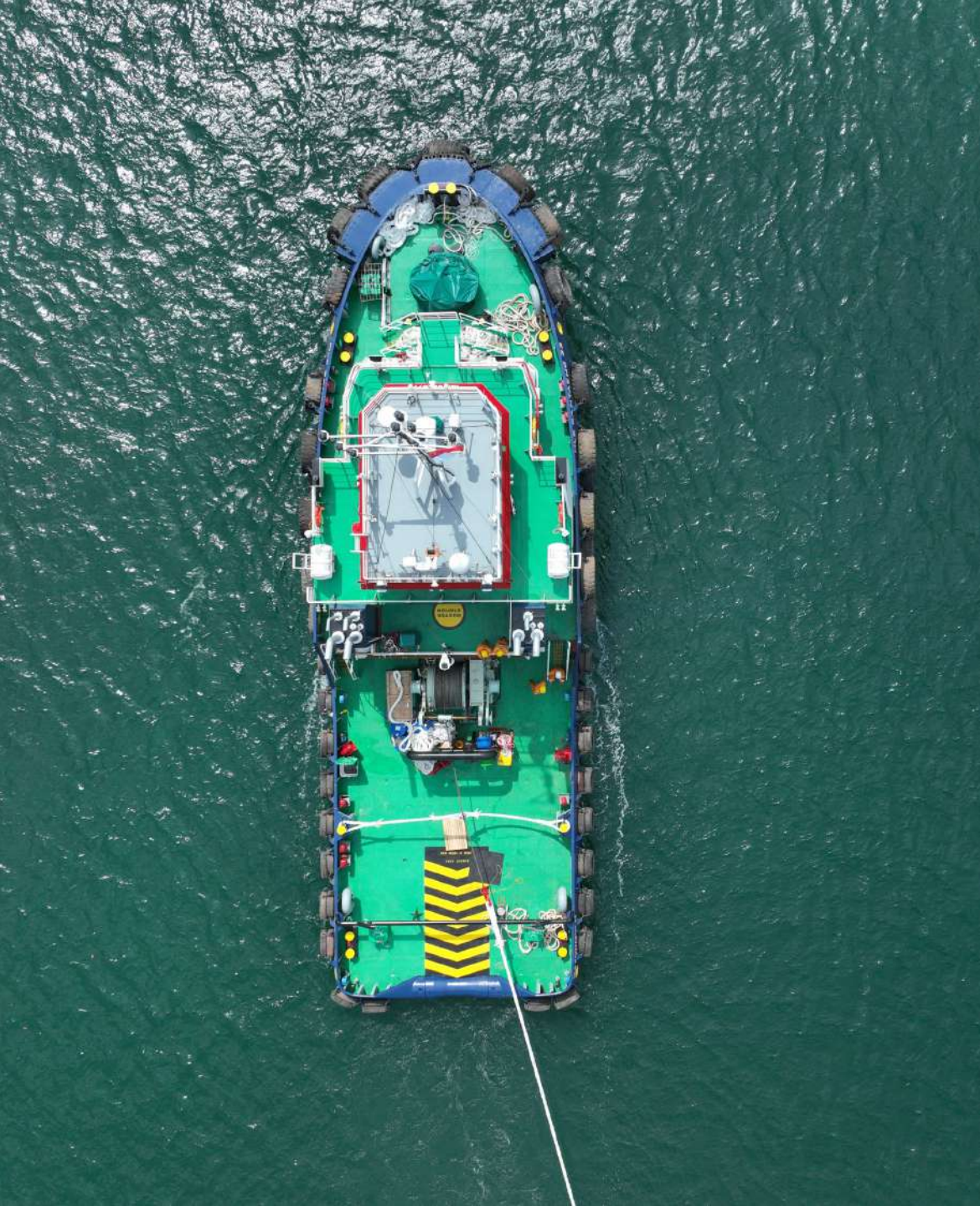


In the shipbuilding world, KTU name is synonymous with tugboats due to its long and reputable track record of building quality tugs nationwide.



EMPEROR 1 and DINASTI 3301





MLB BANTAENG 32 & MLB 3902





## Deck Cargo Barges

For every cargo

Up to 2022, KTU Shipyard has built various sizes and design of barges. Ranging from flat top barge, oil barge, crude palm oil barge, hatch barge and accommodation barges.

Our custom build barges cater to the transportation of timber, coal, cement, and more.





KTU Shipyard 1000th Deck Cargo Barge



## Over 1000 barges delivered

Our in house design team has been refining its designs for barges for over two decades. Our production for barges has exceeded over 1000 units and counting.



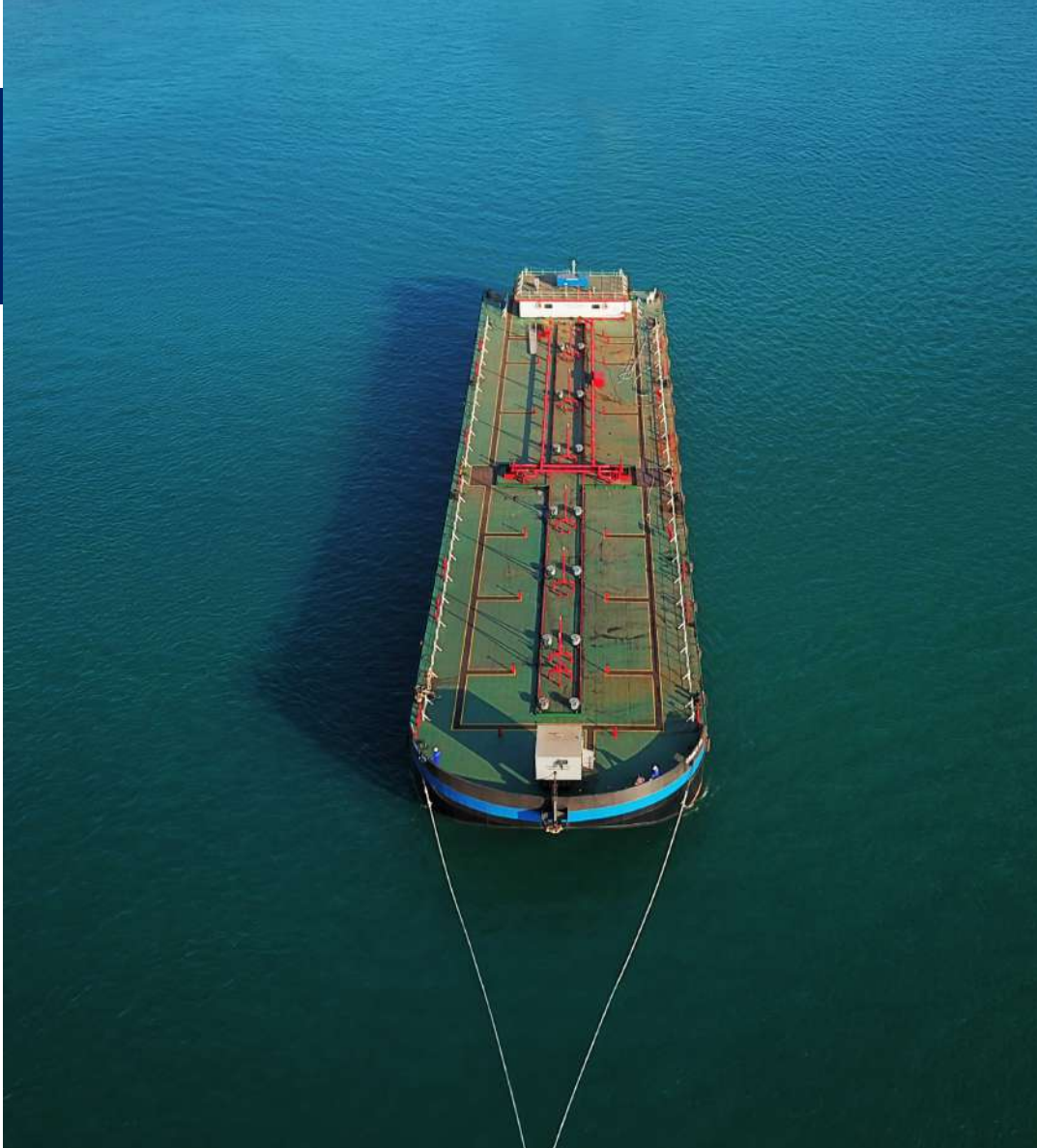


PACIFIC STAR 8703 & KARYA PACIFIC 2233





MBP Series for PT. Maritim Barito Perkasa



## Oil Barges

Our oil barge production has also been a core product for KTU as it help facilitate the logistics for palm oil plantations nationwide.













## Crane Barges

### Lifting the easy way

KTU Shipyard has partnered with companies like MACGREGOR and Liebherr for its lifting equipment. We make sure to work with world-class and reliable vendors to ensure reliability and safety as well as develop a long-lasting partnership.









MAHKOTA SANGKULIRANG I









## General Cargo

KTU Shipyard has built several versions of general cargos over the years.

In 2020, KTU Shipyard partnered with Groot Ship Design to construct various versions of general cargo vessels to cater to both domestic and international market.



## Technical Specification

Operations	Indonesia and Europe
Builder	KTU Shipyard
Designer	Groot Ship Design
Design	4400 DWT MPV
Length, oa	93.5 m
Breadth, molded	14.4 m
Depth, molded	7.1 m
Draught	5.18 m
Cargo Capacity	5,433 m3
Main Engines	1 x Hanshin LH28LRG 1,176 kW at 395 rpm
Aux Engine	3 x Baudouin 6M16 260KVA, 1800 RPM
Speed	10 knots at 4 mts laden
Accommodation	For 10 Men







4999 DWT Cement Carrier





## Tankers

Over the years, we have constructed 4 units of oil tankers ranging from 5000-6500DWT.

Designed by Malaysia marine consultant, United Design. Each tanker is powered by Hanshin diesel engines.

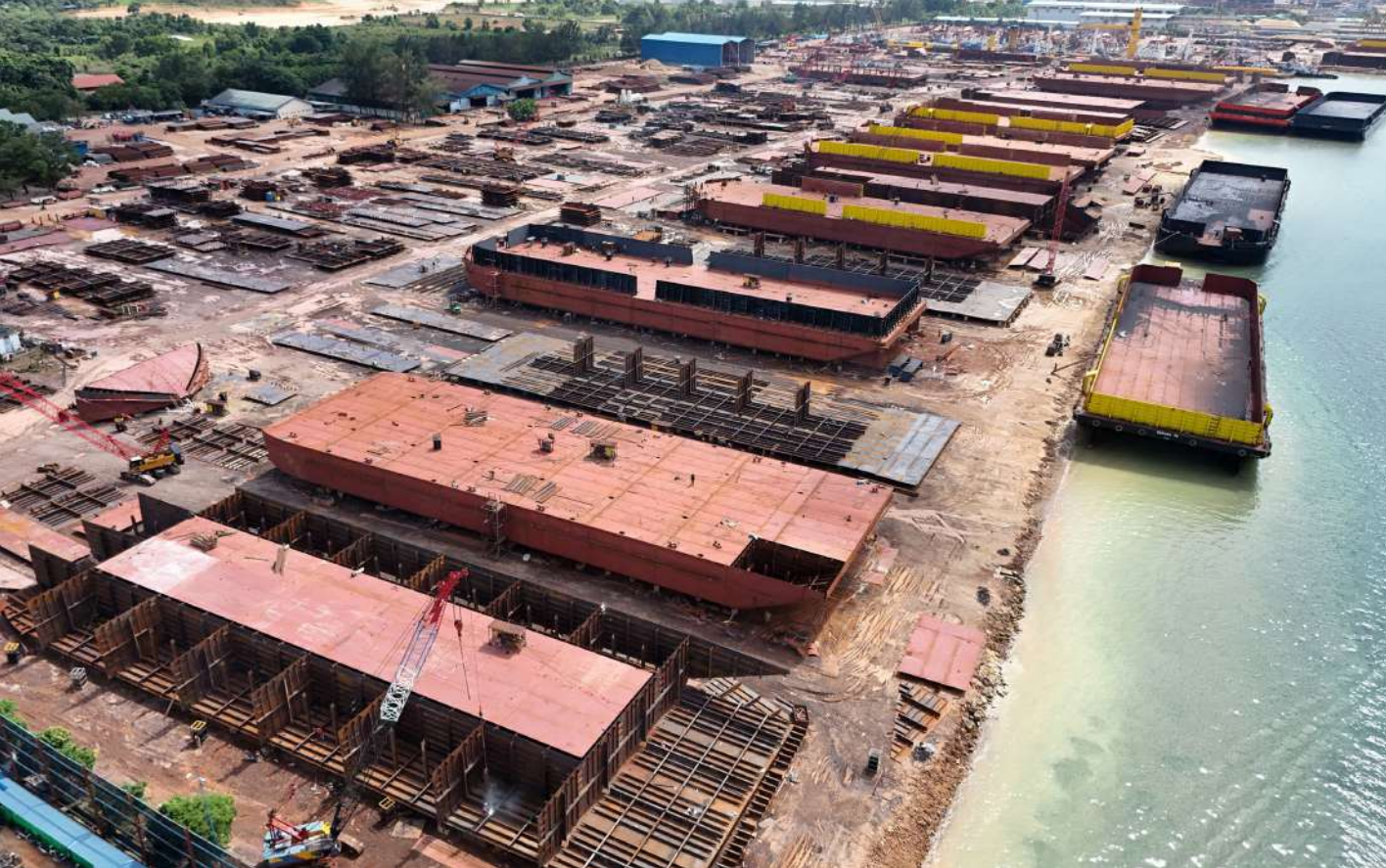






MPMT XV





## Sagulung Yard

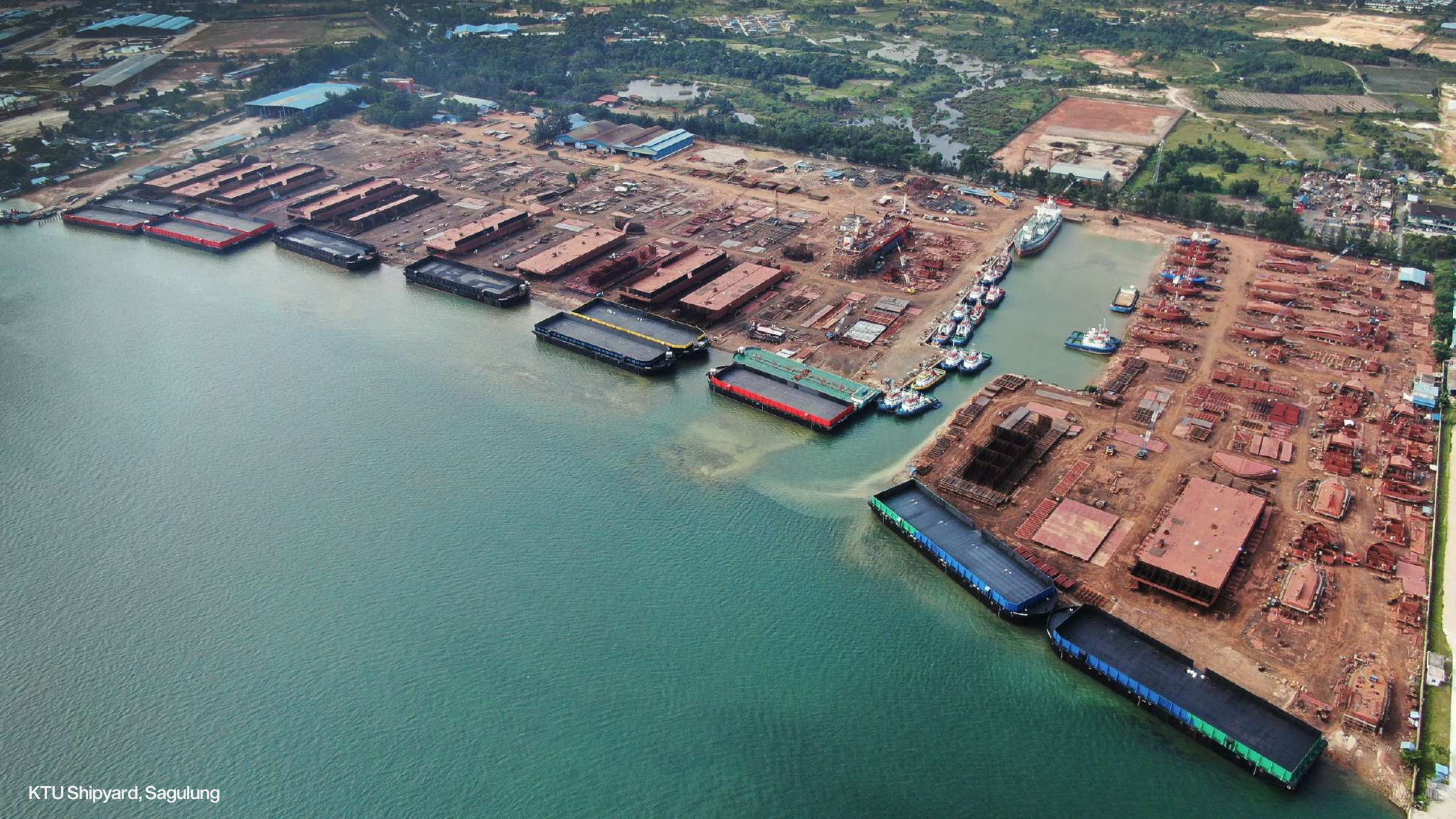
Our Sagulung shipyard located on the coast in the west of Batam, Indonesia has a total land size of 34Ha. It is home to our headquarters in Batam.

Sagulung has a capacity to construct over 40 units of various ships at a single time. It features a launch way of up to 1000m optimizing our overall production process.

It also features a 250m jetty for docking and berthing capacity.







KTU Shipyard, Sagulung





## Workshops

Our Sagulung facility is also equipped with modernized equipment and custom workshops for all our production needs.

From steel work, fabrication and outfitting equipment, KTU Shipyard has an in house team to streamline our production schedule. Our team consist of skilled and trained individuals to tackle and projects we take.



AUTO BLASTING



BENDING & SHEARING





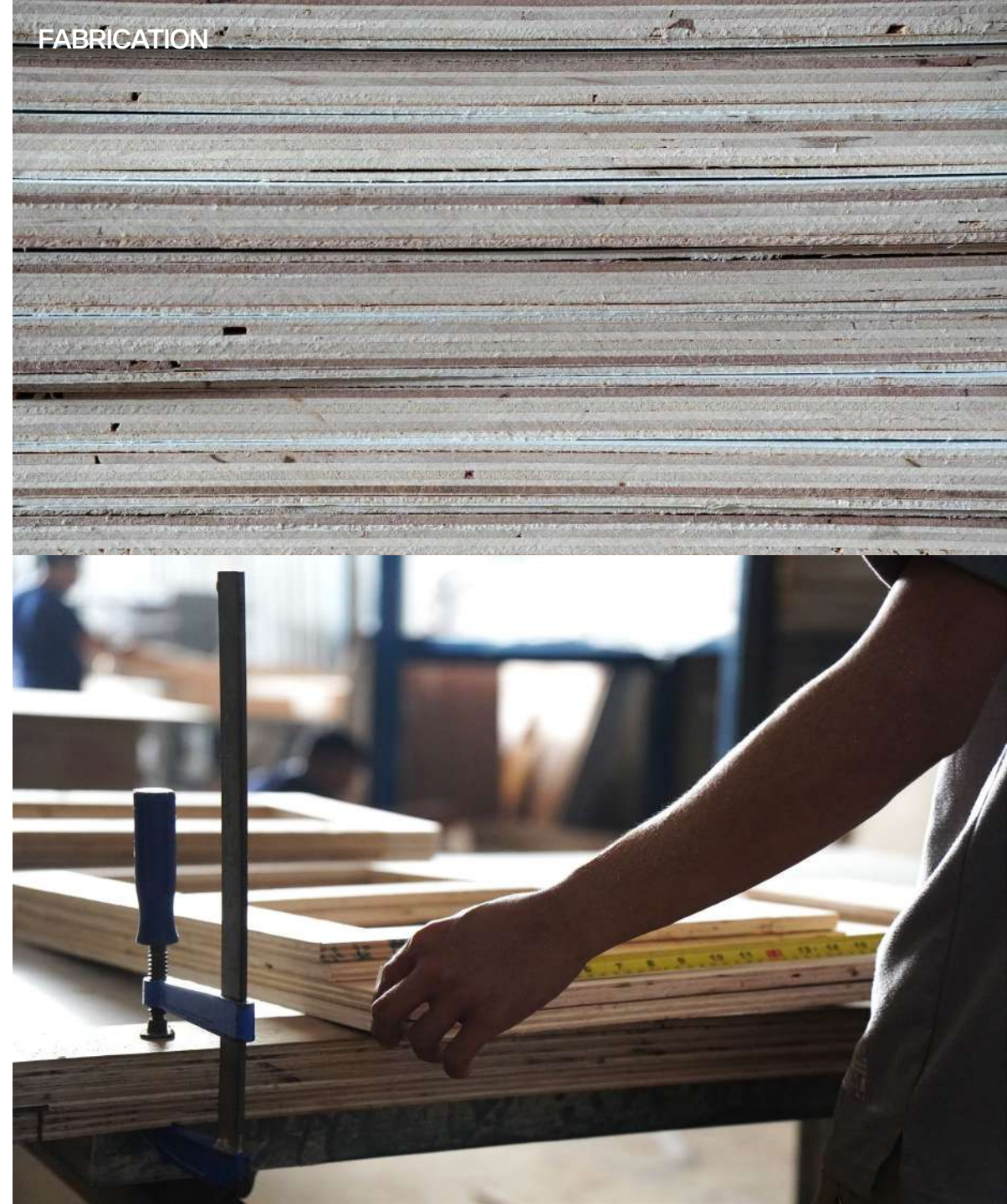
CNC WORKSHOP



LATHE WORKSHOP









## Tanjung Riau Yard

This highly advanced yard features a 12m PEMAMEK assembly line and a 400 Ton crane by KONECRANES.

KTU Shipyard, Tanjung Riau has a 400 Ton capacity gantry crane by KONECRANES. The crane has a span of 110 meters and a lifting height of 51.12 meters. This has been highly efficient in streamlining our production process.







400 Ton KONECRANE





## Workshops

The shipyard have both opened and covered facilities available for short-term or long-term storage requirement.

Opened areas are compacted and levelled, accessible by main road and is next to the wharf. Covered locations are well ventilated and insulated against environmental elements.



## Pemamek Assembly Line



In order to meet ever reducing lead times, shipyards need efficient and flexible panel production lines for the high-volume production of flat panels. This highly efficient panel transport solution creates a safe, flexible working environment and provides annual steel throughput production capacities of up to 20,000 tonnes.



## Sekupang Yard

Sekupang is KTU's first yard location in Batam in 2001.

It spans over 22 Ha of area and is focused on a large portion of KTU's barges production.







## Marunda Yard

KTU Shipyard Marunda is located in Jakarta Indonesia.

Its focus are on tug building and repair works that is assisted with our 450 Ton MBH by Cimolai.





450 Ton MBH Cimolai





Our Cimolai is tremendously helpful in lifting variety of ships including fishing vessels to luxury yachts.

Our Marunda yard is home to repair works and currently accommodating production process of tugboats.





## **PT. DOKMOR OPTIMA KAJAYAN**

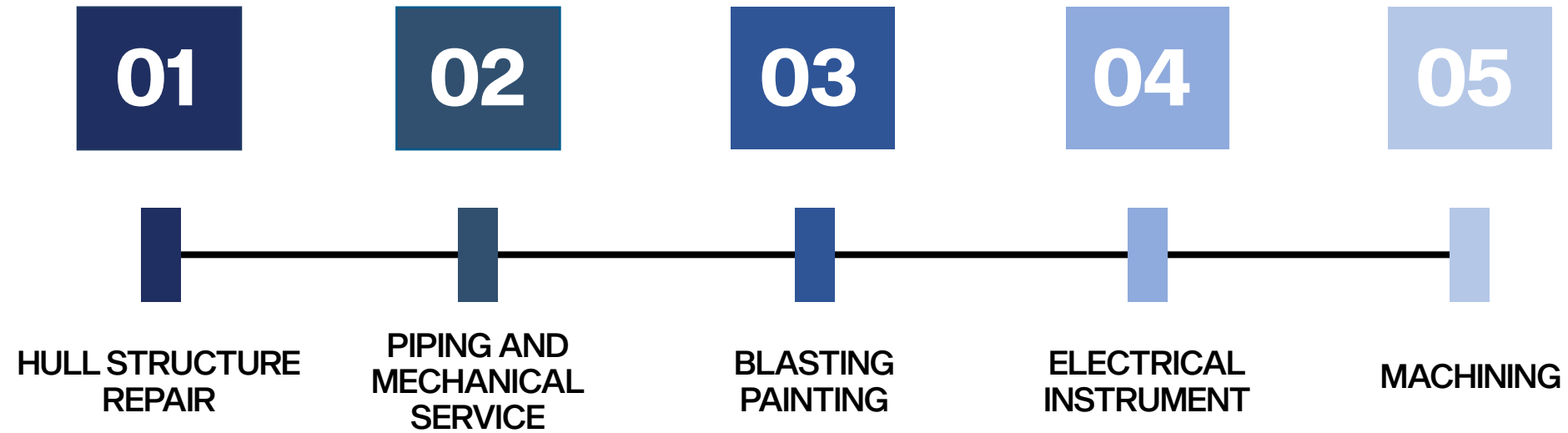
In 2021, PT.DOKMOR opened in Lapuko, South East Sulawesi with its main agenda of repairing vessel around the region.

DOKMOR is also in a strategic position in terms of distance from two major players in the nickel industry, PT. TSINGSHAN Steel Indonesia and PT. VDNI.

Our repair works are tugboats and barges.



## PT. DOKMOR Services







# 23 Years of Shipbuilding

Over 1600 Units Delivered



# Clients



PT. Pertamina Trans Kontinental



PT. Meratus Group



PT. Adaro



PT. Mitrabahtera Segara Sejati



D/S Norden



PT. Kartika Samudra Adijaya



PT. Graha Nusantara Shipping



PT. Karya Pacific Shipping



PT. Maritim Barito Perkasa



PT. Anaga Shipping Indonesia



# Clients



PT. Batulicin Nusantara Maritim



PT. Safinah Samudera Shipping



PT. KYK Lines



PT. Multi Indo Selaras



PT. Trans Maritim Pratama



PT. Sinar Varuna Sentosa



PT. Putra Sim Mandiri



PT. Dinasti Samudera Abadi



PT. Permata Lintas Abadi



PT. Tonasa Lines



# Clients



PT. Indexim Coalindo



PT. Transcoal Pacific



PT. Masada Jaya Lines



PT. Wira Ariandi Utama



PT. Freeport Indonesia



PT. Armuda Samudra Global



PT. Multi Agung Sarana Ananda



PT. Kapal Mini Indonesia



PT. Safari Samudera Raya



PT. Trans Energy Indonesia



# Clients



PT. Maritim Prima Mandiri



PT. Citra Pratama Lines



PT. Prima Samudera Jaya



PT. Virgo Samudera Jaya



PT. Patria Maritime Lines



PT. Duta Bahari Menara Line



PT. Barokah Gemilang Perkasav



PT. Sinar Alam Duta Perdana



PT. Eka Nusantara Line



PT. Mahameru Kencana Abadi



### **Headquarters**

Jakarta , Indonesia

Jl. Kali Besar Barat  
No.37, RT.6/RW.3,  
Roa Malaka, Tambora, Jakarta Barat, Jakarta 11230  
T: +62 21 0778 6910382

### **KTU Sagulung**

Batam , Indonesia

Sungai Binti , Sagulung, Batam  
City, Riau Islands 29434  
T: +62 21 0778 8075060

### **KTU Tanjung Riau**

Batam , Indonesia

Jl. Tanjung Riau. Kawasan Industri  
Sekupang.  
Batam 29432 , Indonesia  
T: +62 21 0778 327691

### **KTU Sekupang**

Batam , Indonesia

Jalan RE. Martadinata KM 2,  
Sekupang Batam  
T: +62 21 0778 6910382

### **KTU Marunda**

Jakarta , Indonesia

RT.3/RW/7, Marunda, Cilincing,  
North Jakarta, DKI Jakarta  
T: +62 0815 1940 936

### **PT. DOK**

Sulawesi , Indonesia

Linkung V Labutu  
Kec. Moramo  
Kab.Konawe Selatan  
Sulawesi Tenggara 92391



[www.ktushipyard.com](http://www.ktushipyard.com)